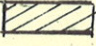
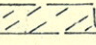
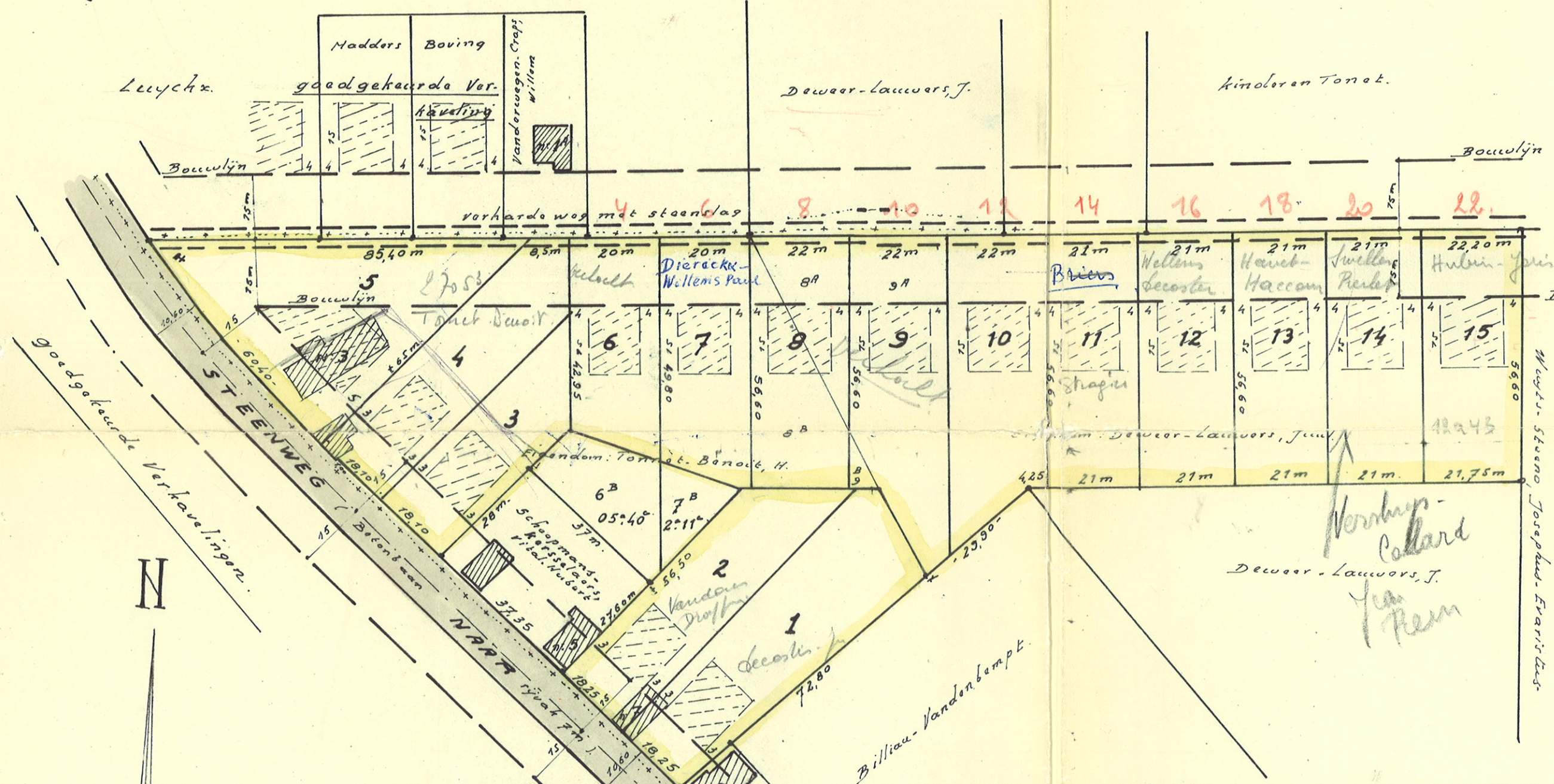
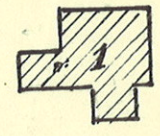


GEMEENTE-BIERBEEK.

Eigendom: Loten: 1-2-3-4-5-6-7-8^B - Tonnet. Benoit, Martinus-Henricus.
BIERBEEK - Steenweg op opvelp n^o 3.

Loten: 8^A, 9^A, 10, 11, 12, 13, 14, 15 - Deweer-Lauwers, J.
LEUVEN: Tiense straat n^o 286-288 (Tel. (016) 211.77).

-  Bestaande gebouwen.
-  Inplanting: Ontwerp.
Maximum bebouwings opp.
- Bushaltes.
- + + + + + = Bestaande Waterleiding.
- ~ ~ ~ ~ ~ = Riolering: Buizen ø 40 Lengte weg. opvelp.



VERHOUDING T.

Lot 1:	$T = \frac{300}{1734} \cdot 0,17$	Lot 11:	$T = \frac{300}{1188} = 0,25$
Lot 2:	$T = \frac{300}{1292} \cdot 0,23$	Lot 12:	$T = \frac{300}{1188} = 0,25$
Lot 3:	$T = \frac{300}{1001} \cdot 0,30$	Lot 13:	$T = \frac{300}{1188} = 0,25$
	$T = \frac{300}{1001} \cdot 0,23$	Lot 14:	$T = \frac{300}{1188} = 0,25$