

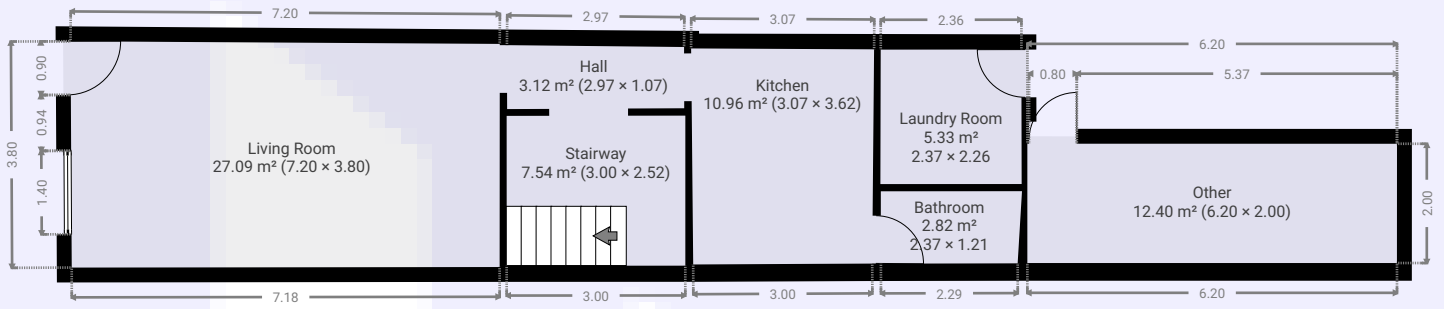
# Heirbrugstraat 24,Lokeren\_plan

Heirbrugstraat 24, 9160 Lokeren, Vlaams Gewest, BE  
TOTAL AREA: 102.63 m<sup>2</sup> • LIVING AREA: 102.63 m<sup>2</sup> • FLOORS: 2 • ROOMS: 10

I.HUISPUNT

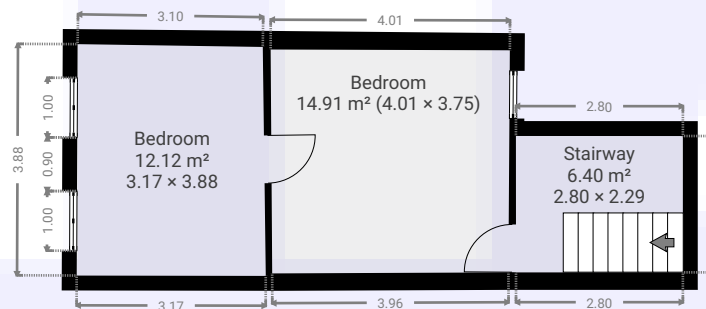
## ▼ Ground Floor

TOTAL AREA: 69.21 m<sup>2</sup> • LIVING AREA: 69.21 m<sup>2</sup> • ROOMS: 7



## ▼ 1st Floor

TOTAL AREA: 33.42 m<sup>2</sup> • LIVING AREA: 33.42 m<sup>2</sup> • ROOMS: 3



THIS FLOORPLAN IS PROVIDED WITHOUT WARRANTY OF ANY KIND. SENSOPIA DISCLAIMS ANY WARRANTY INCLUDING, WITHOUT LIMITATION, SATISFACTORY QUALITY OR ACCURACY OF DIMENSIONS.

0 2 4 6m 1:127

Page 1/1