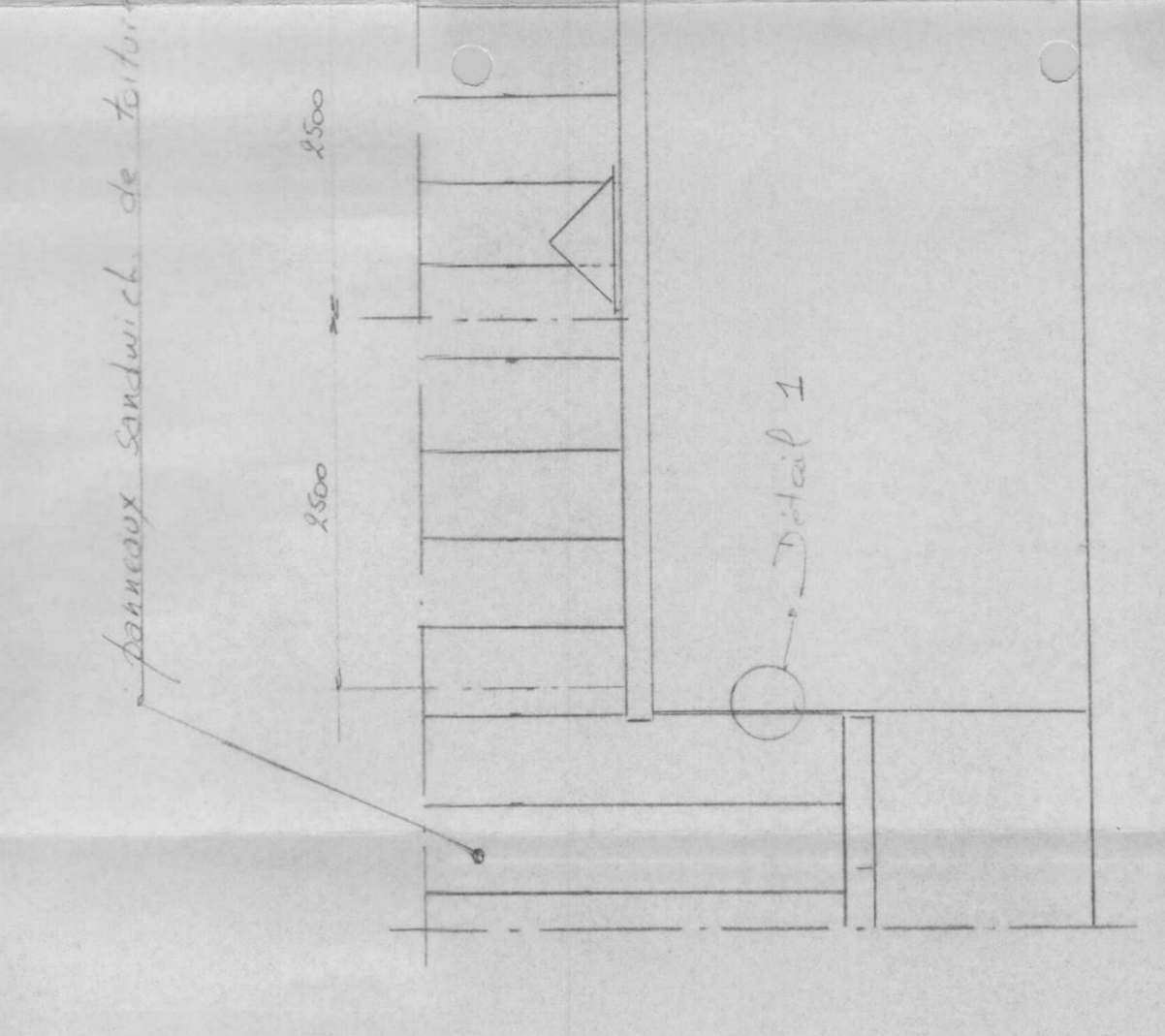
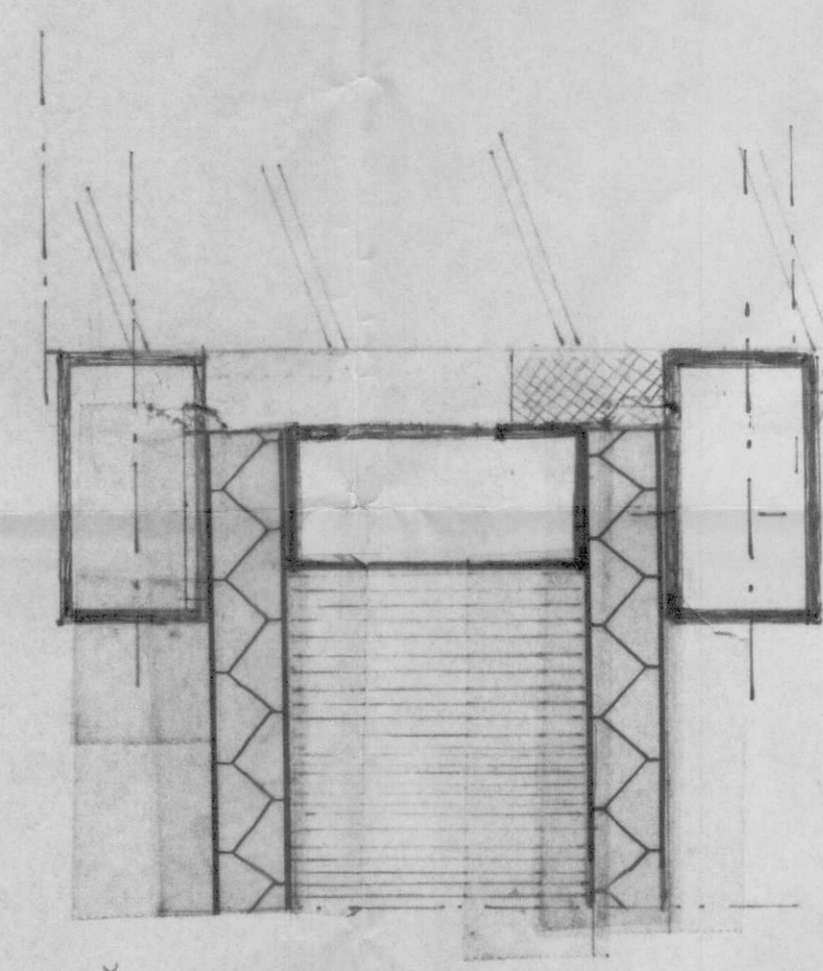


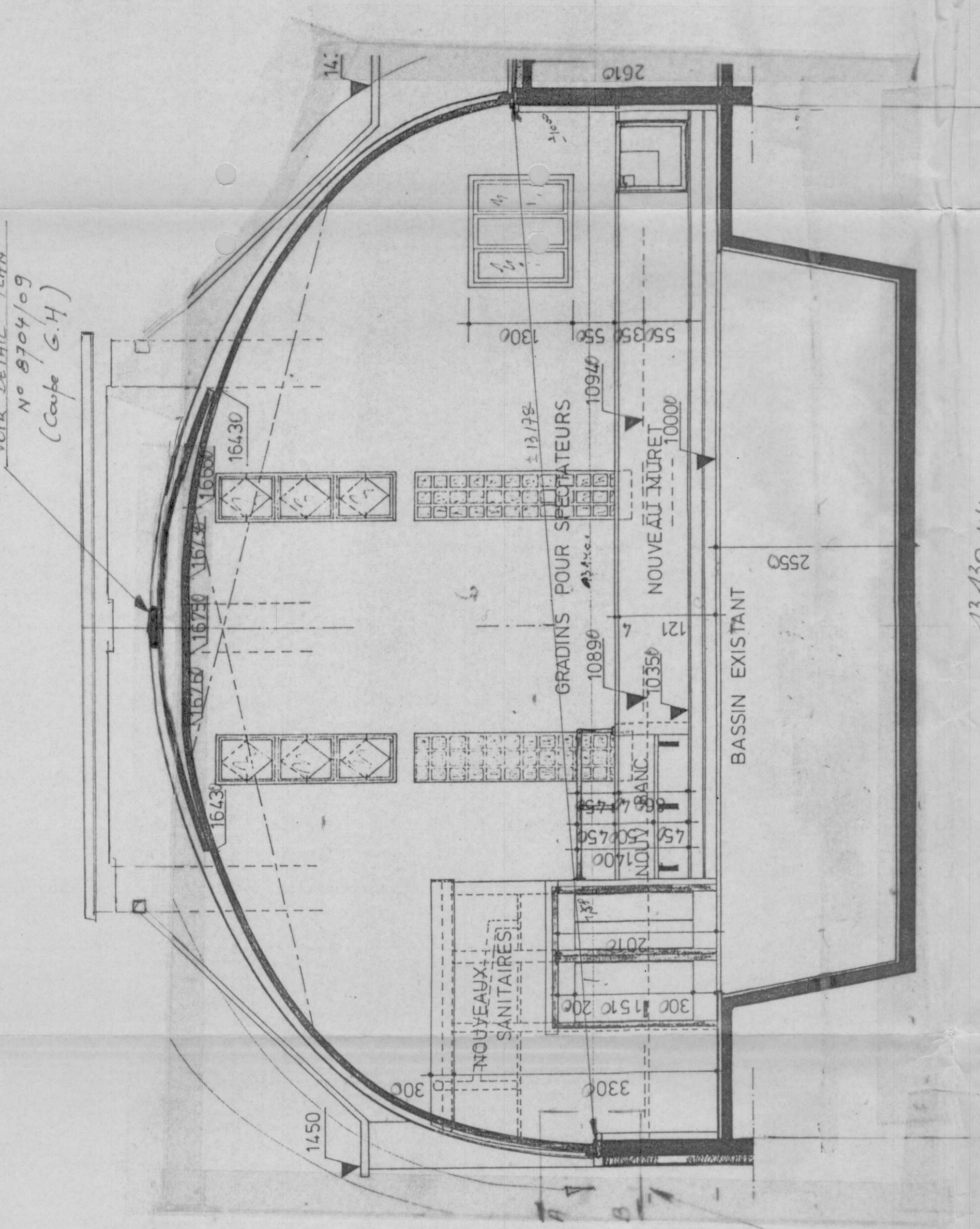
COUPE K-L (ech. 1/50)



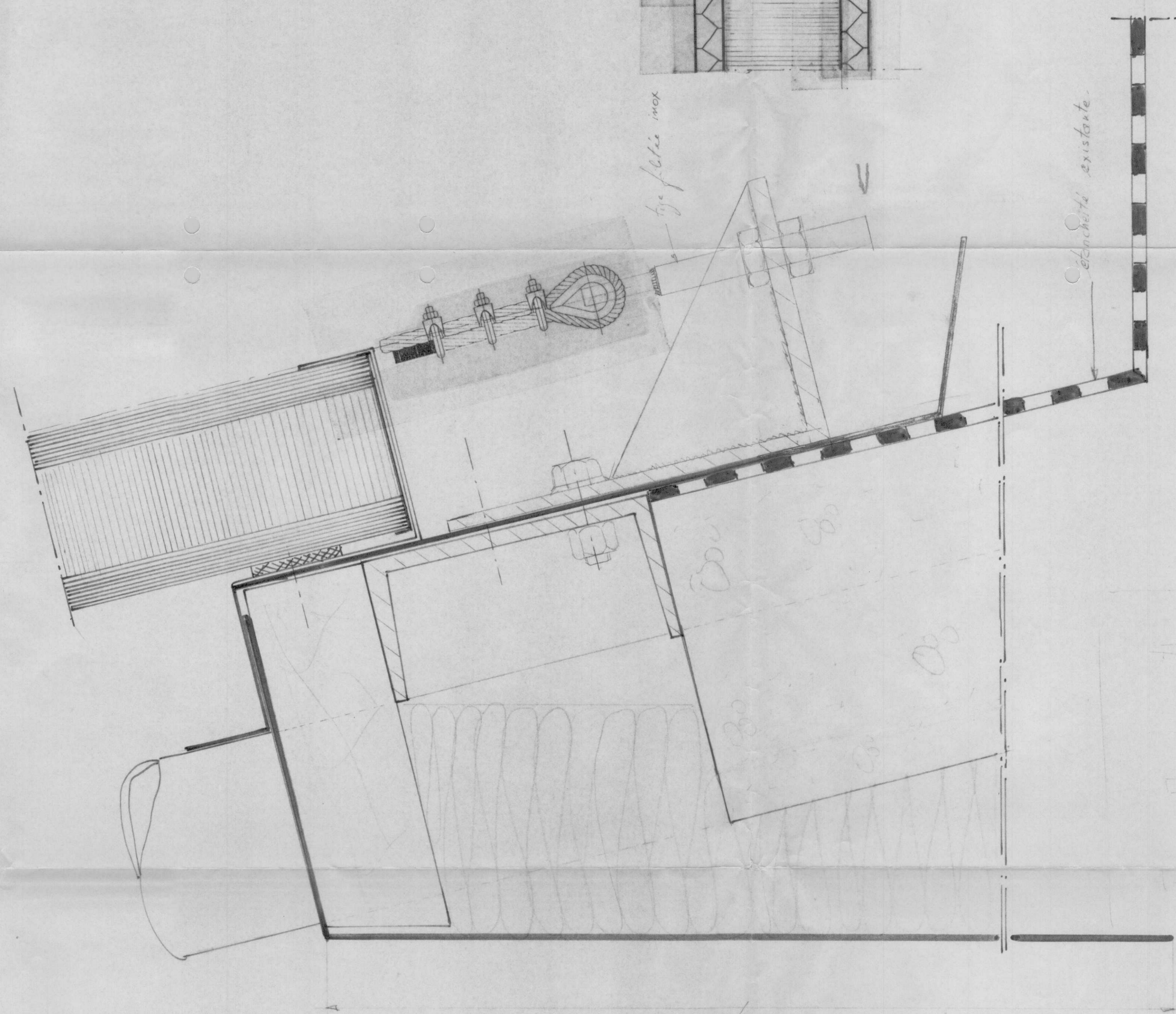
VUE SUIVANT Y



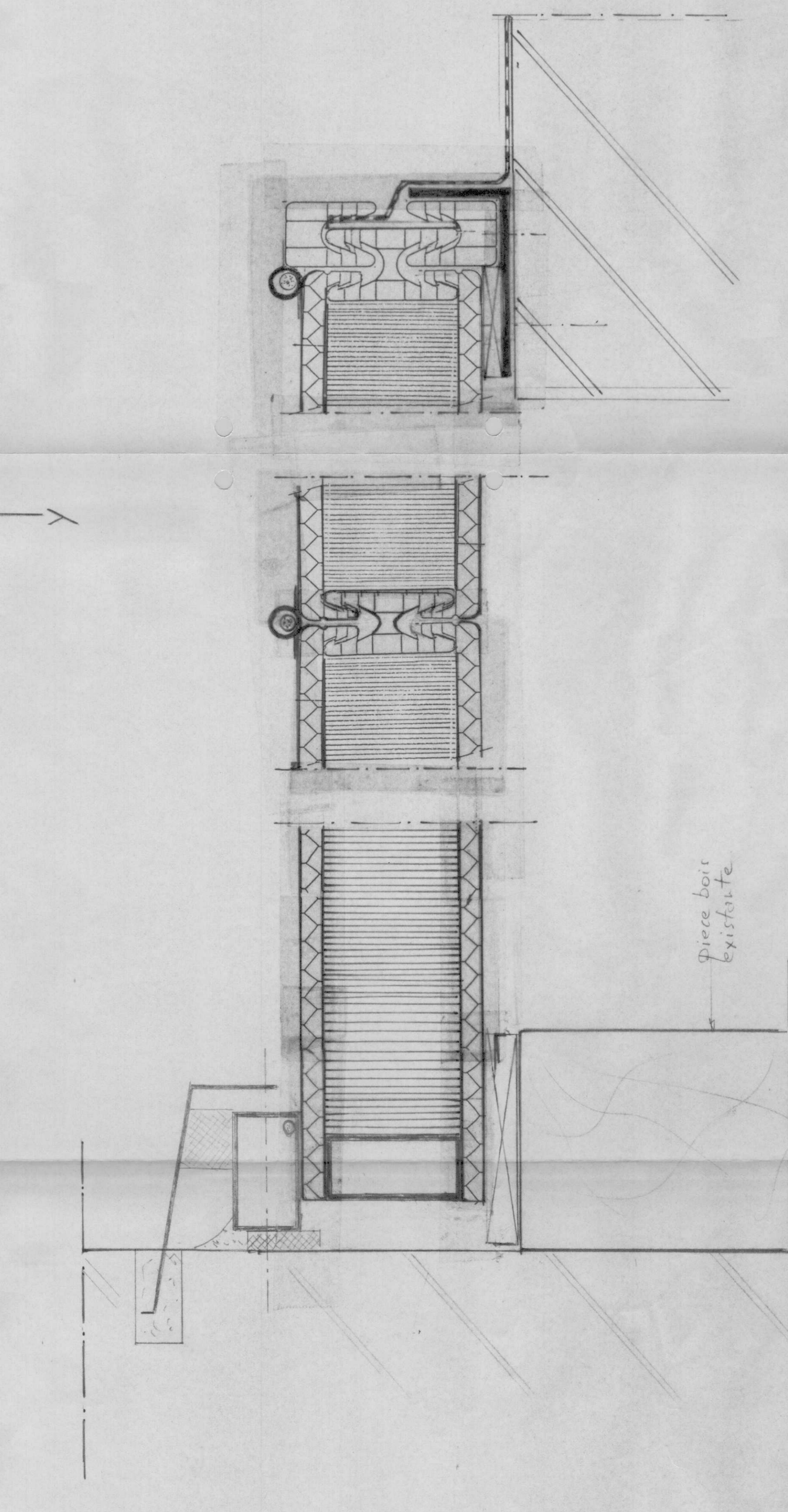
DETAIL 1 (ech. 1/10)



COUPE M-N (ech. 1/50)



COUPE P-Q (ech. 1/50)



COUPE Q-R

COUPE S-T

COUPE O-P

**RED HOUSE**

Bureau d'Architecture  
 100, rue de la République  
 1000 Bruxelles  
 Tél. 02 512 21 21  
 Fax 02 512 21 22  
 Email: redhouse@redhouse.be

Site: CHANTIER WERF - "LE COCIGNE" - "ZONNE D'ACTIVITE" - "ZONNE D'ACTIVITE" - "ZONNE D'ACTIVITE"

Architect: RED HOUSE  
 Date: 2010  
 Scale: 1/50

Project: CHANTIER WERF - "LE COCIGNE" - "ZONNE D'ACTIVITE" - "ZONNE D'ACTIVITE" - "ZONNE D'ACTIVITE"

Client: RED HOUSE

Project: CHANTIER WERF - "LE COCIGNE" - "ZONNE D'ACTIVITE" - "ZONNE D'ACTIVITE" - "ZONNE D'ACTIVITE"

Client: RED HOUSE

Project: CHANTIER WERF - "LE COCIGNE" - "ZONNE D'ACTIVITE" - "ZONNE D'ACTIVITE" - "ZONNE D'ACTIVITE"

Client: RED HOUSE