

Proces-verbaal van opmeting

Gemeente Destelbergen 1ste Afd.
Sectie A nr. 16x, 16y

Opp: 165,97m²

Opp: 153,34m²

Coördinaten volgens lokaal stelsel (m)








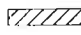

	X	Y		X	Y
1	107.10	111.55	5	125.58	110.69
2	111.59	118.28	6	120.58	110.92
3	121.68	136.53	A	106.64	100.00
4	127.10	146.36	B	81.36	115.21

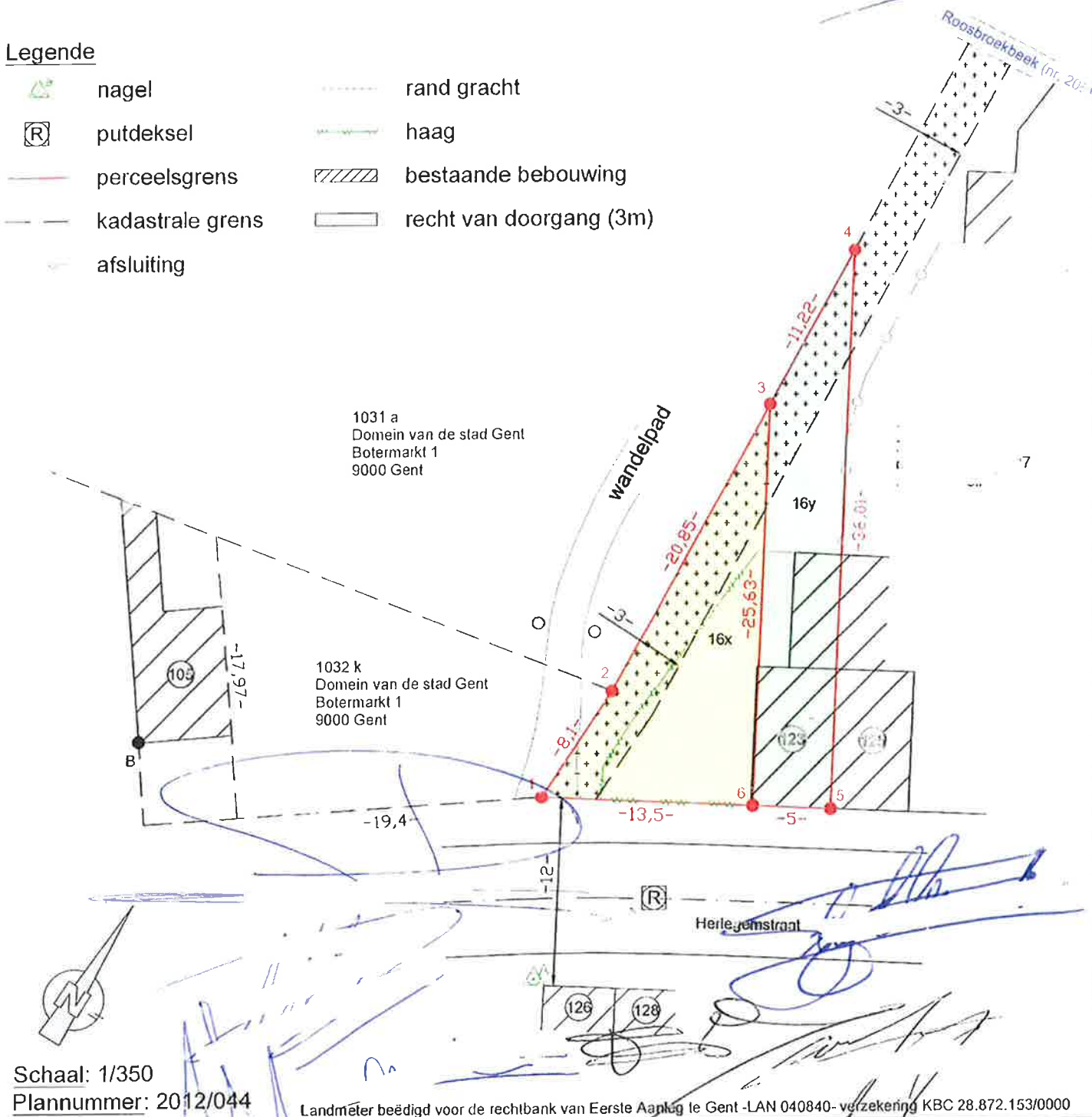
Opgemeten en in plan gebracht door:
Freddy De Seranno
Landmeter-Expert
Dendermondesteenweg 618
9070 Destelbergen
tel. 0475/43.40.48

Destelbergen, 10 december 2012

De Seranno Freddy

Legende

-  nagel
-  putdeksel
-  perceelsgrens
-  kadastrale grens
-  afsluiting
-  rand gracht
-  haag
-  bestaande bebouwing
-  recht van doorgang (3m)



Schaal: 1/350

Plannummer: 2012/044

Landmeter beëdigd voor de rechtbank van Eerste Aanleg te Gent -LAN 040840- verzekering KBC 28.872.153/0000