

LINGTEN v.d. ROOILIJNEN

Q-R = 28,00^m

P-S = 133,50^m

S-S' = 18,00^m

T-U = 9,50^m

U-V = 548,57^m

W-X = 161,60^m

X-Y = 524,45^m

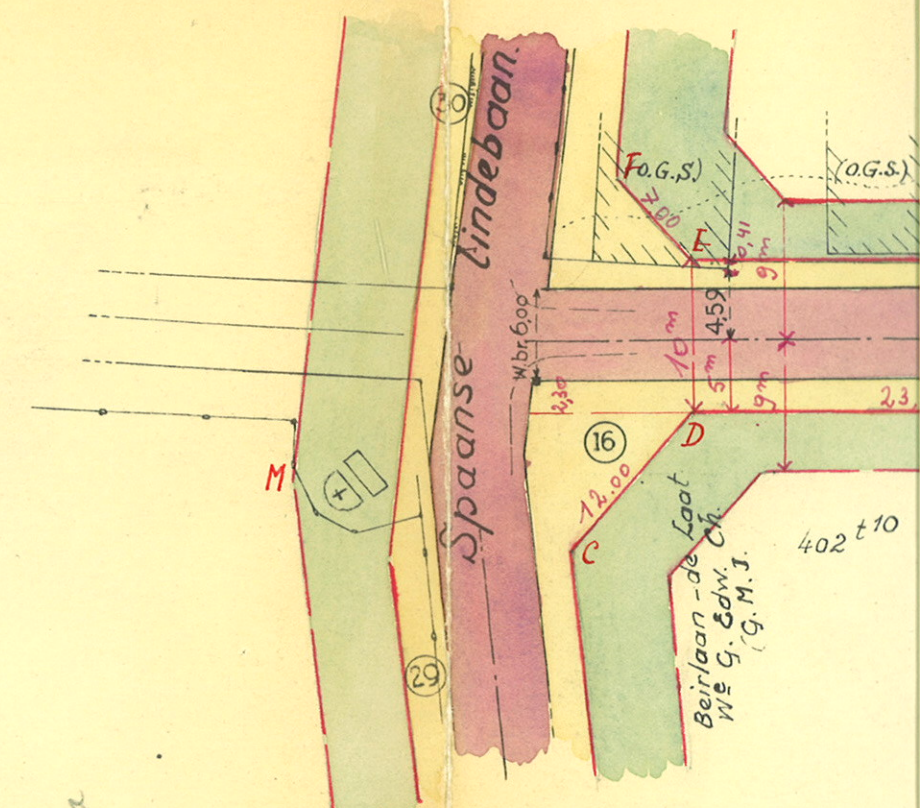
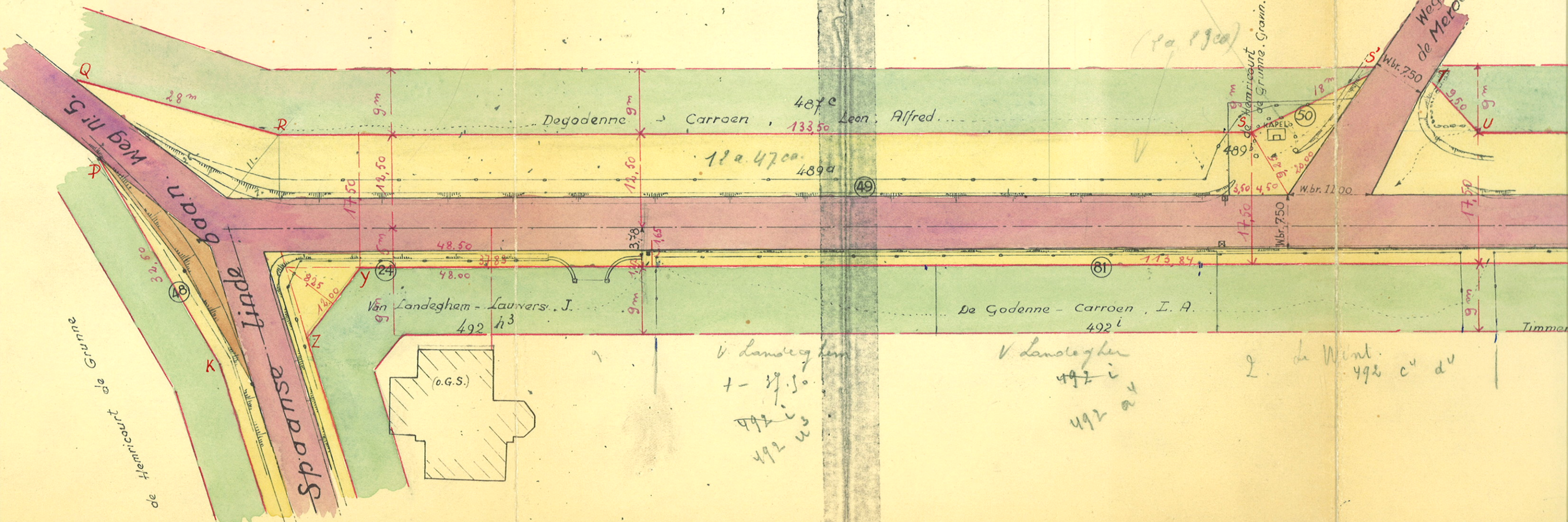
Y-Z = 12,00^m

LINGTEN v.d. ROOILIJNEN

A'-E = 579,38^m

B'-C' = 5,00^m

C'-D' = 536,63^m



V. Landeghem
492 i
492 a
492 u

V. Landeghem
492 i
492 a
492 u

L. de Wint
492 c
492 d

76 a

(ca. 1900)

Timmer

402 t 10

F.o.G.S.

(o.G.S.)

16

Beirlaan-de Laet

W. G. Edw. Ch.

(G. M. J.)

W. G. Edw. Ch.

(G. M. J.)

W. G. Edw. Ch.

(G. M. J.)

W. G. Edw. Ch.

(G. M. J.)

W. G. Edw. Ch.

(G. M. J.)

W. G. Edw. Ch.

(G. M. J.)

W. G. Edw. Ch.

(G. M. J.)

W. G. Edw. Ch.

(G. M. J.)

W. G. Edw. Ch.

(G. M. J.)

W. G. Edw. Ch.

(G. M. J.)

W. G. Edw. Ch.

(G. M. J.)

W. G. Edw. Ch.

(G. M. J.)

W. G. Edw. Ch.

(G. M. J.)

W. G. Edw. Ch.

(G. M. J.)

W. G. Edw. Ch.

(G. M. J.)

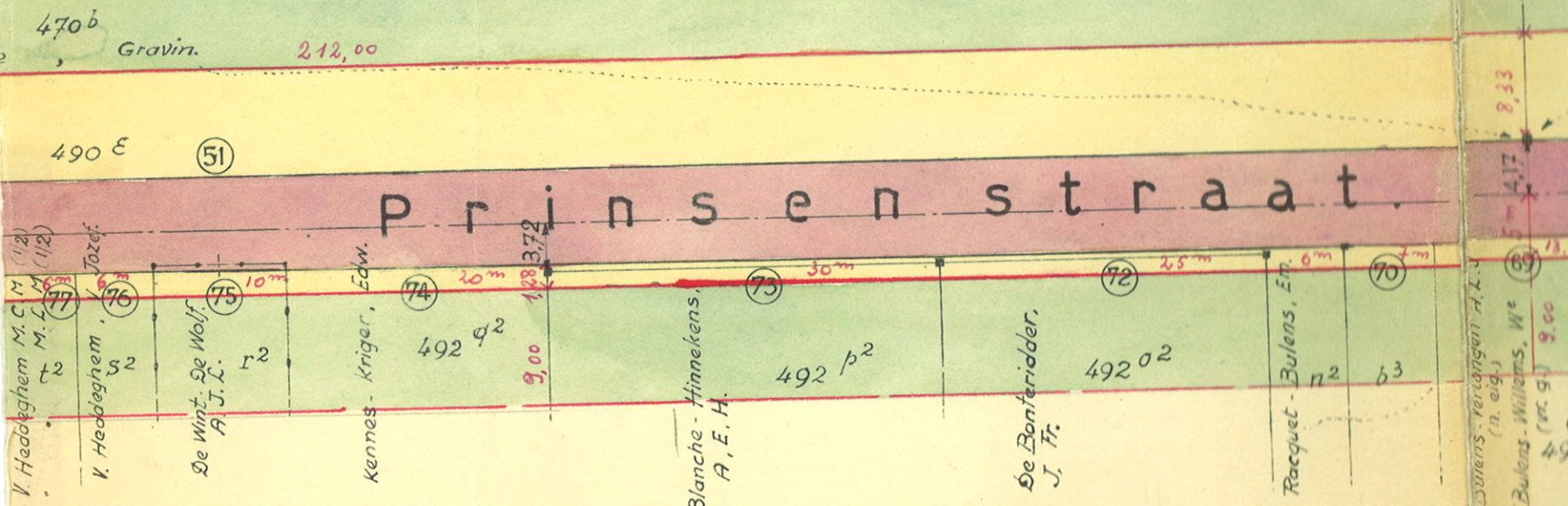
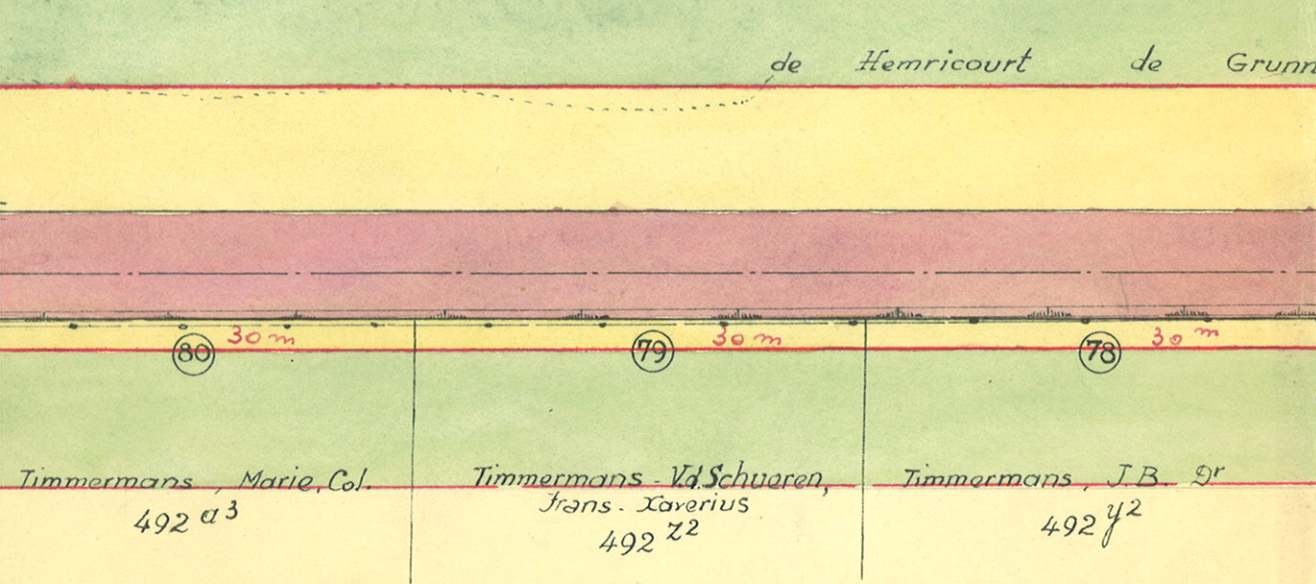
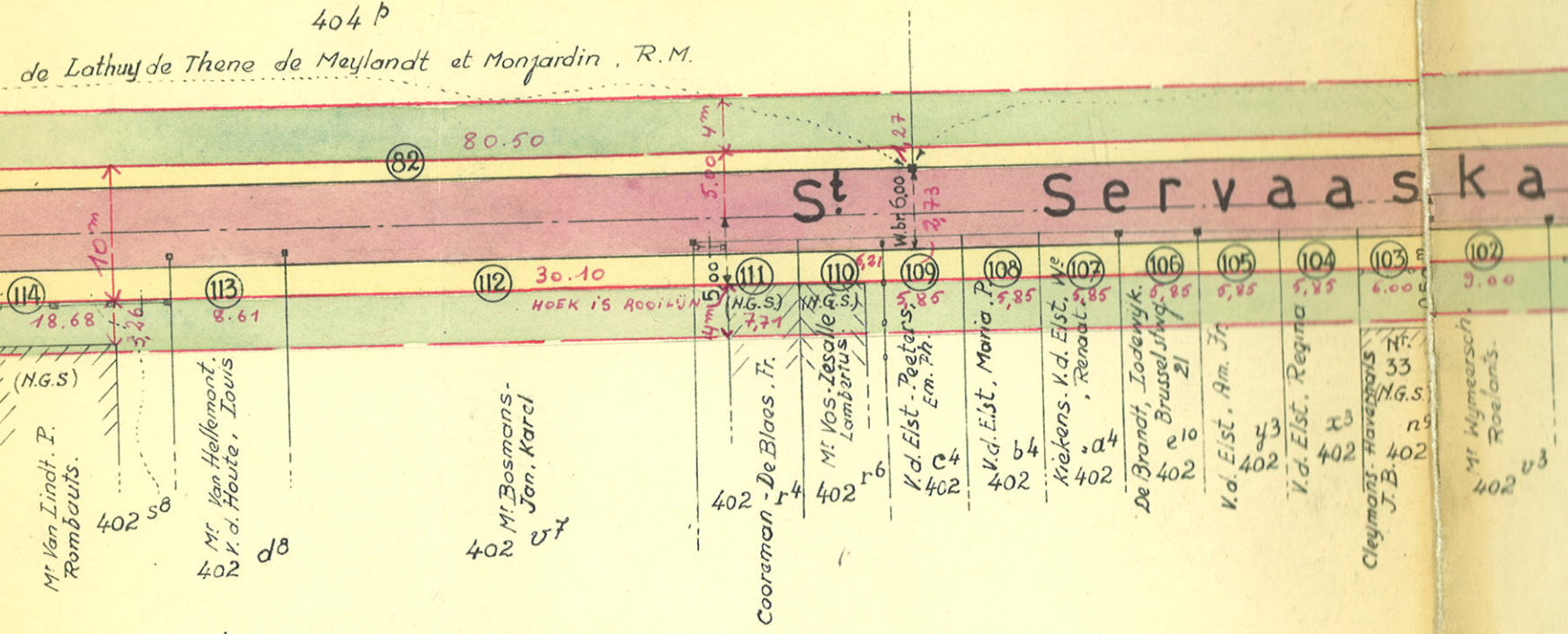
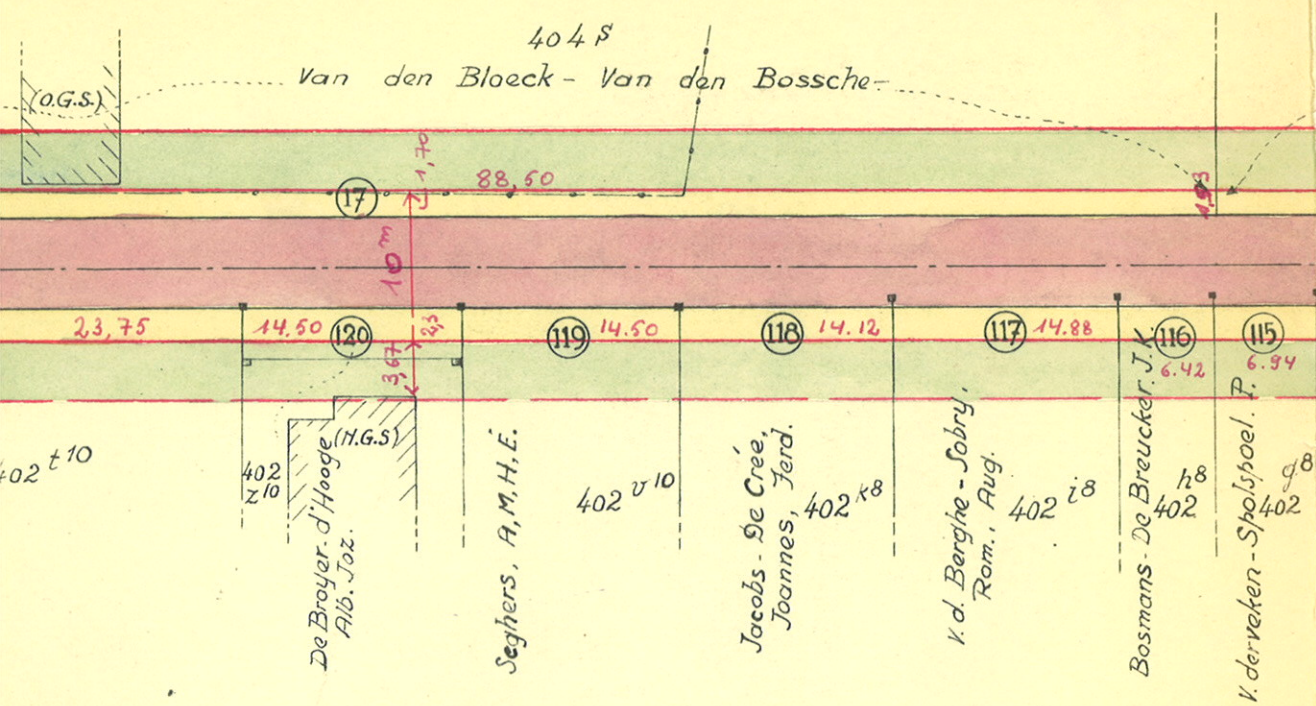
W. G. Edw. Ch.

(G. M. J.)

W. G. Edw. Ch.

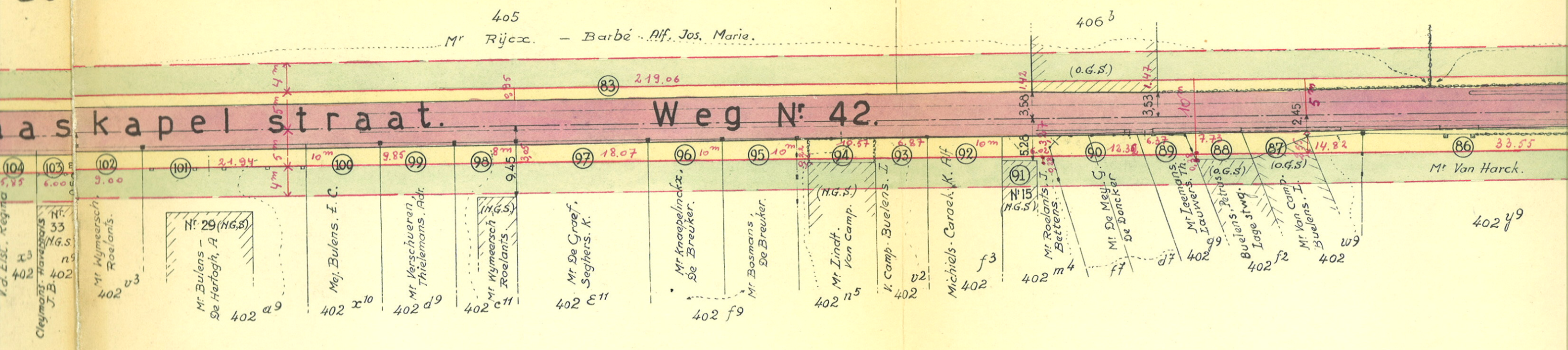
(G. M. J.)

Sectie

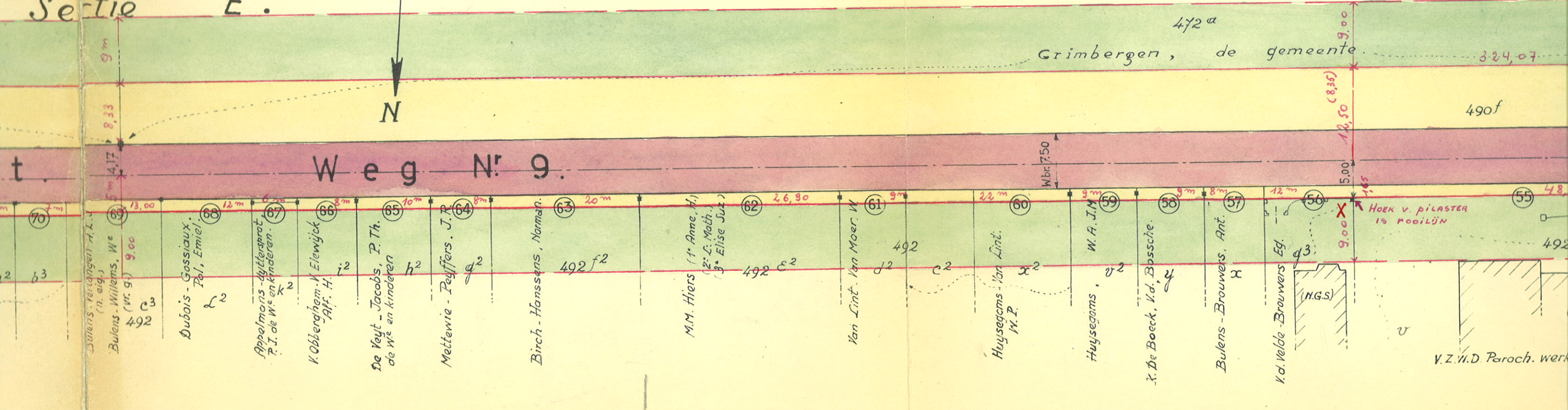


Sectie

Sectie E.



Sectie E.



Sectie E.

